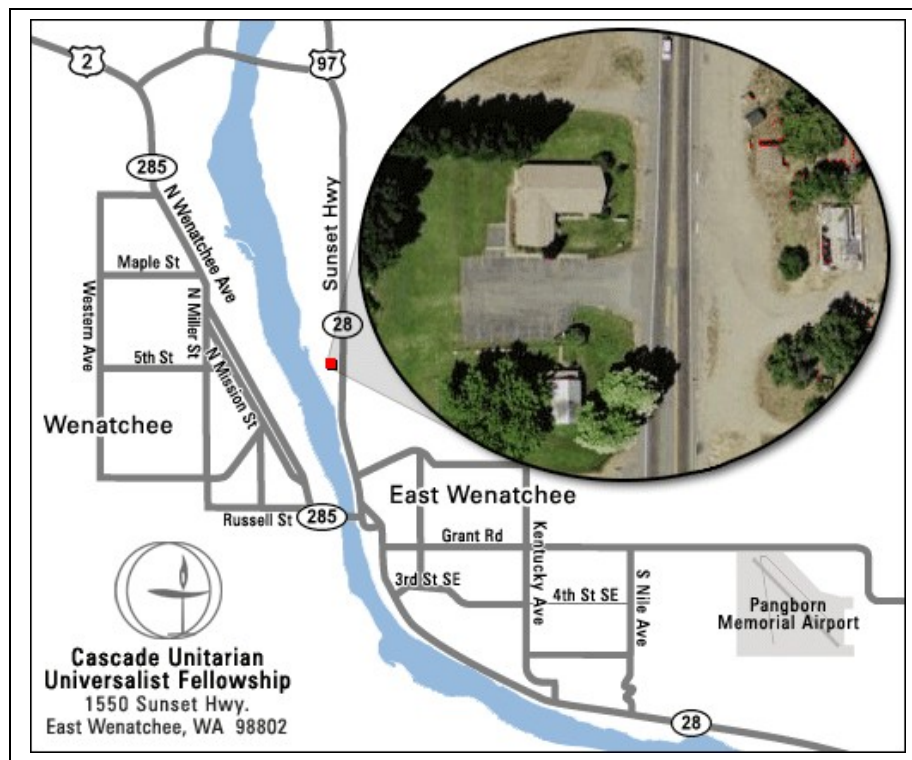


Directions to Cascade Unitarian Universalist Fellowship



From: The Senator George Sellar Bridge (intersection of Highway 28 and Highway 285)

- Take Highway 28 (also called Sunset Highway) north approximately 1.3 miles.
- About a quarter of a mile past 15th Street, you will see Cascade Unitarian Universalist Fellowship on the left.

From: The Odabashian Bridge (intersection of Highway 2/97 and Highway 28)

- Take Highway 28 (also called Sunset Highway) south approximately 2.4 miles.
- About 0.5 miles past 19th Street, you will see Cascade Unitarian Universalist Fellowship on the right.